

Revitalizing Parks-  
Reconnecting Neighborhoods

Holyoke, MA

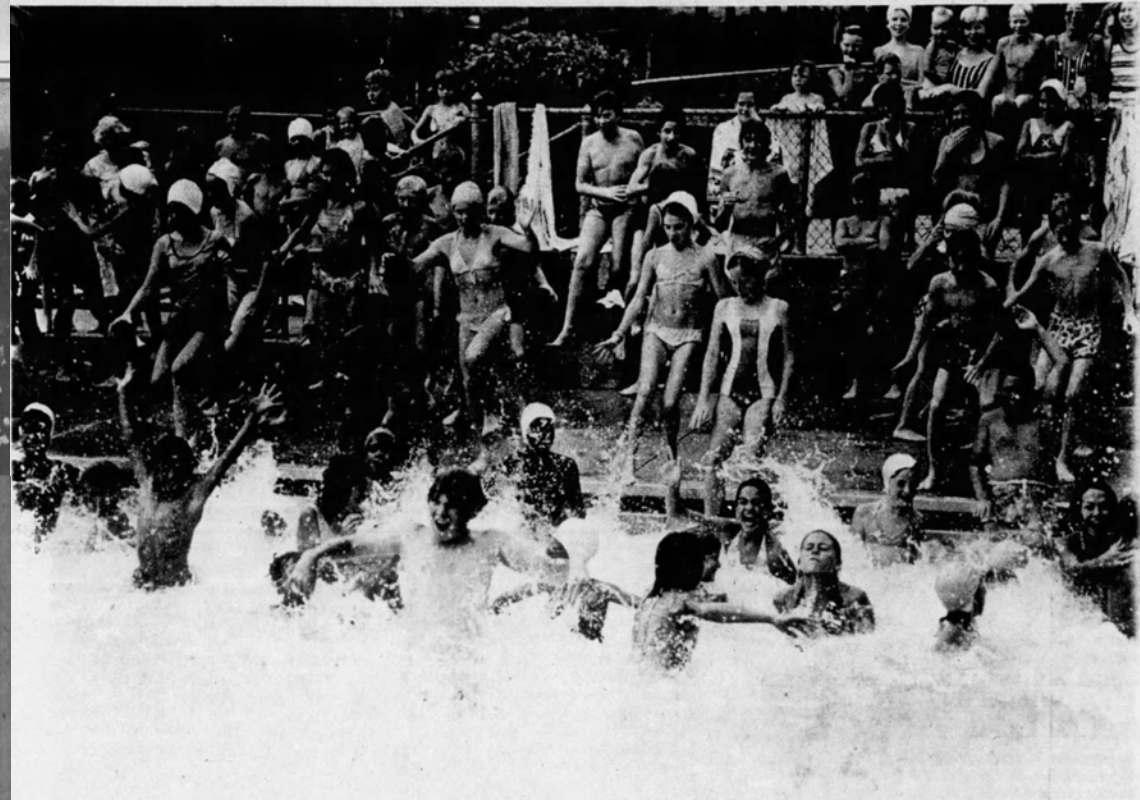
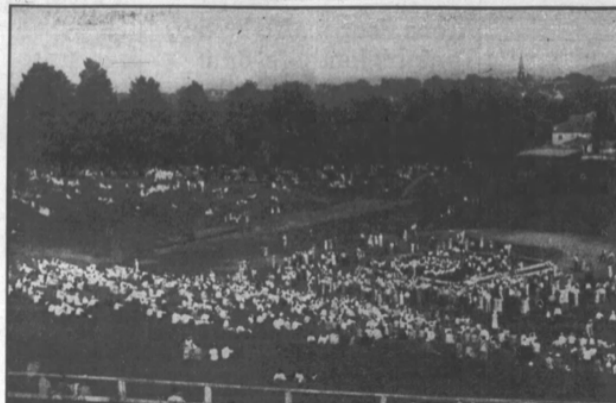


Westover Airport





### Six Thousand Enjoy Sunday Concert By Nine Bands



KID STUFF — Chmura State Pool was apparently jammed Friday with kids, kids and more kids whose activity made the water at the popular state pool look like the grand rapids. A few of the older folks in the crowd were consigned to the

background by youngsters hamming it up for the Transcript-Telegram camera. Chmura State Pool is located just up the mountain road from the newly renovated Community Field. (T-T Photo: Sears)

## COL. SCOTT GIVES FINE PARK GIFT

Marks Holyoke's Golden Anniversary by Gift of Property to Unite Anniversary Hill With Community Field.

Col. Scott in recognition of the courtesy extended to him and his adoption as one of its citizens and also on account of the interest of his daughter Mrs. Russell W. Magna in the presentation of Crafts Tavern, will give to Holyoke "the connecting link between the Crafts lot and the Community Field on the hill top. Col. Scott learned from Mayor Cronin and Chairman Sinclair of the Park Board that with the purchase of the so-called Bray property on the hill, the connection could be made. The Community Field they are to de-

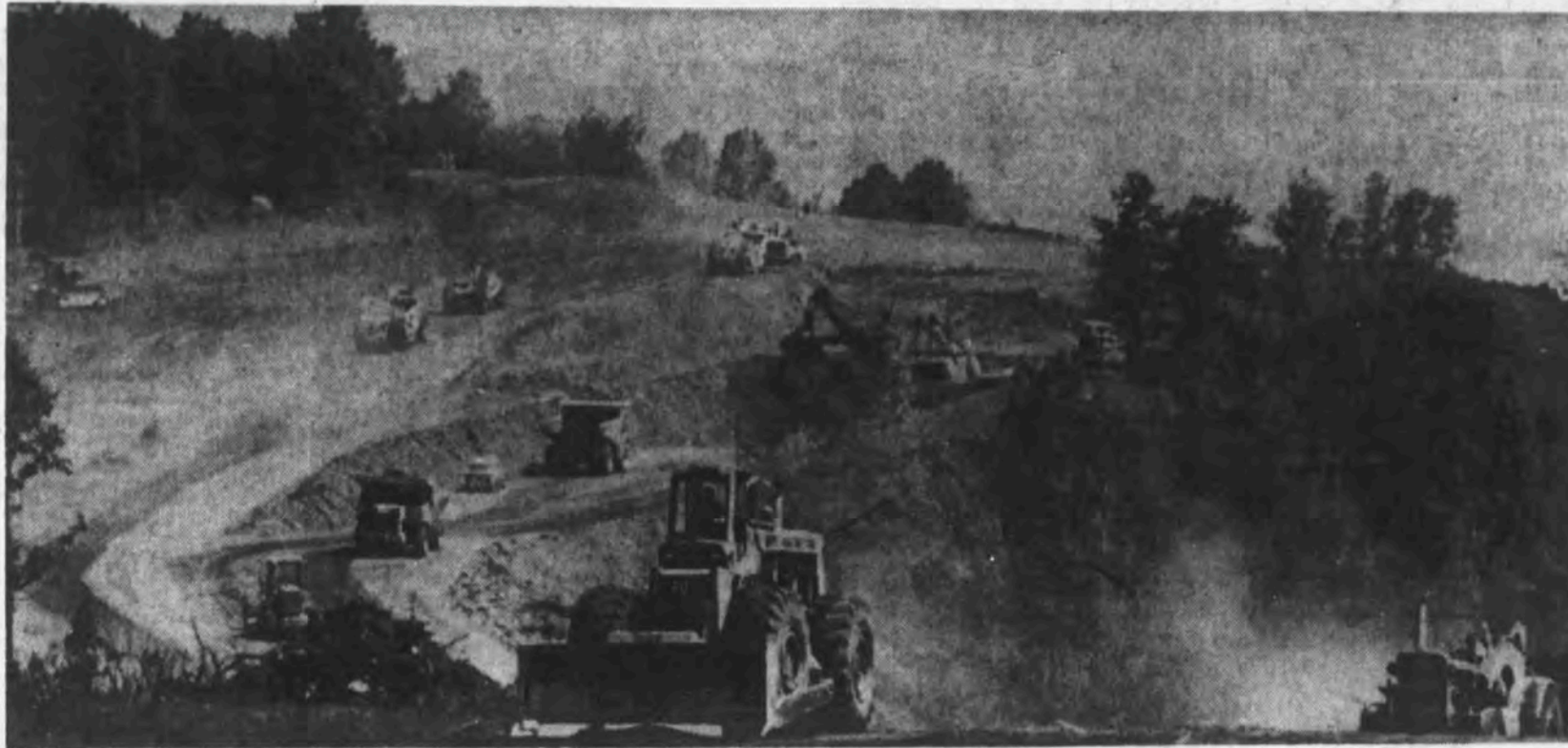
Now Col. Scott's gift assures to the city a great park reaching from the Easthampton Road across the hill top to Cherry street. Col. Scott makes the gift "as a golden anniversary presentation in recognition of the fact that while 27 languages are spoken in Holyoke, that during the celebration all languages, and all religious bodies, and all political parties, united in one language which should be called Holyoke." Aside from the gifts of parks by the

Anniversary Park, Holyoke, where WPA projects have prepared for a wide variety of winter sports

### Anniversary Hill A Skiing And Scenic Spot





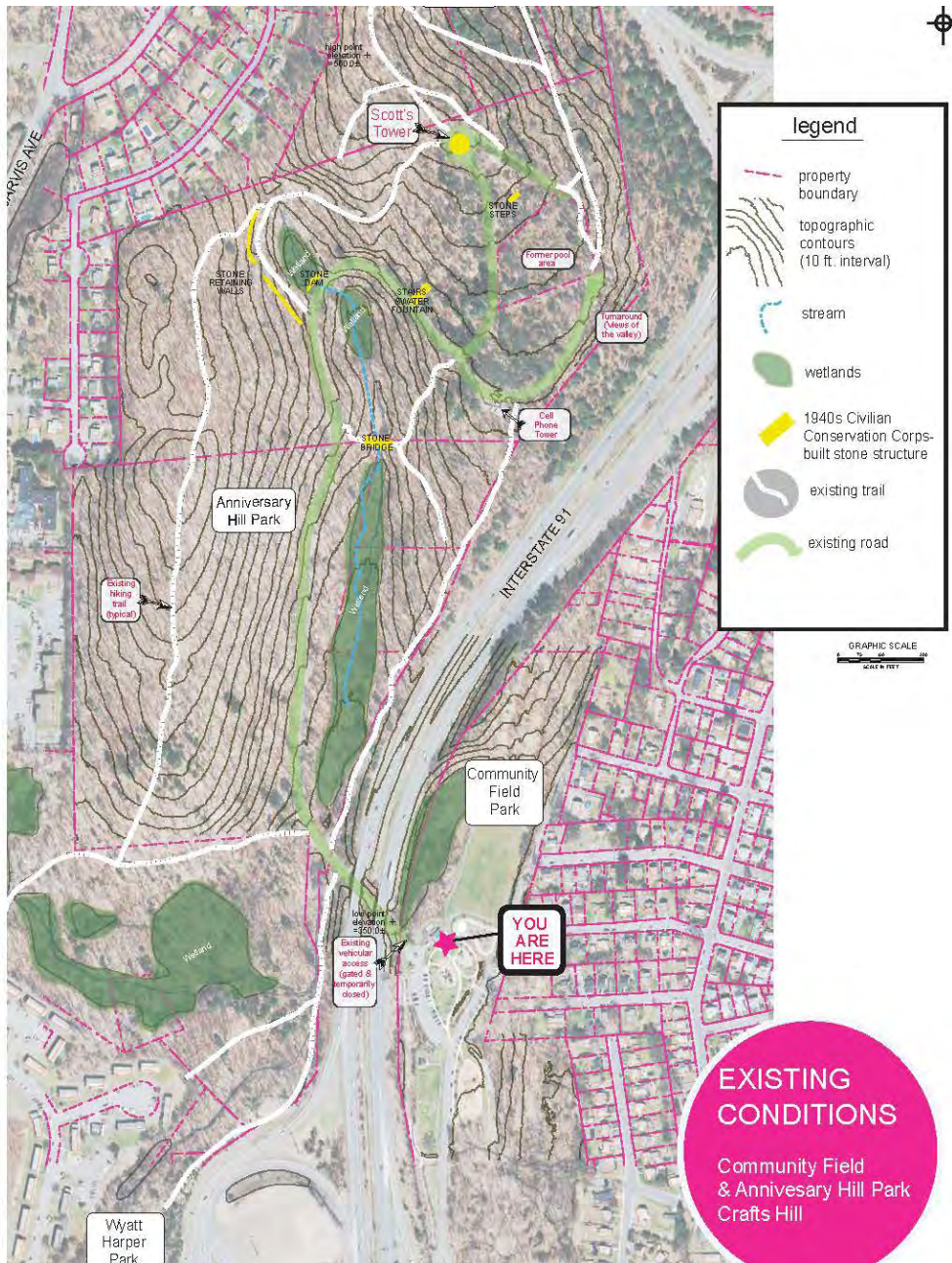


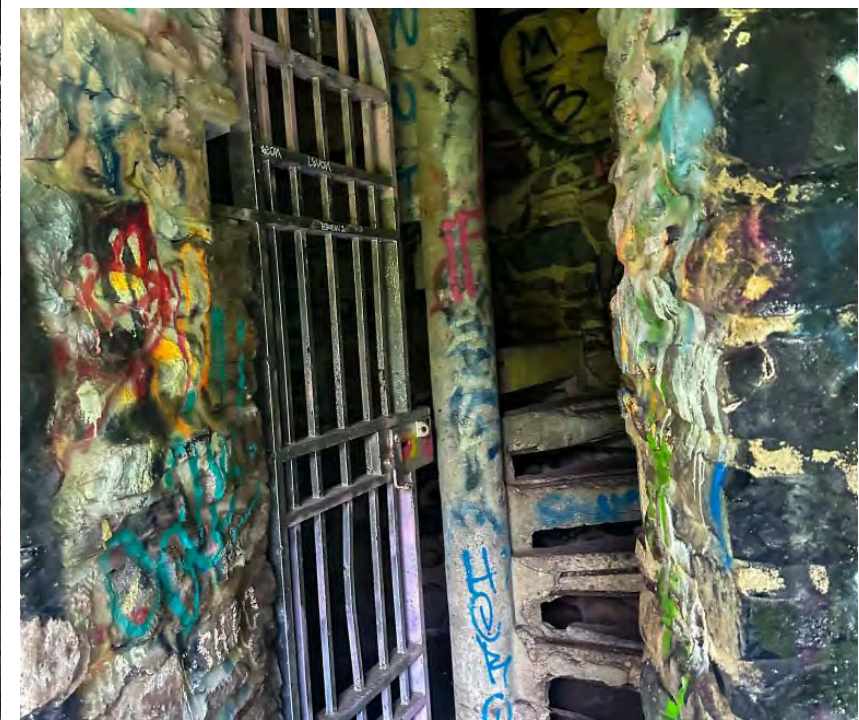
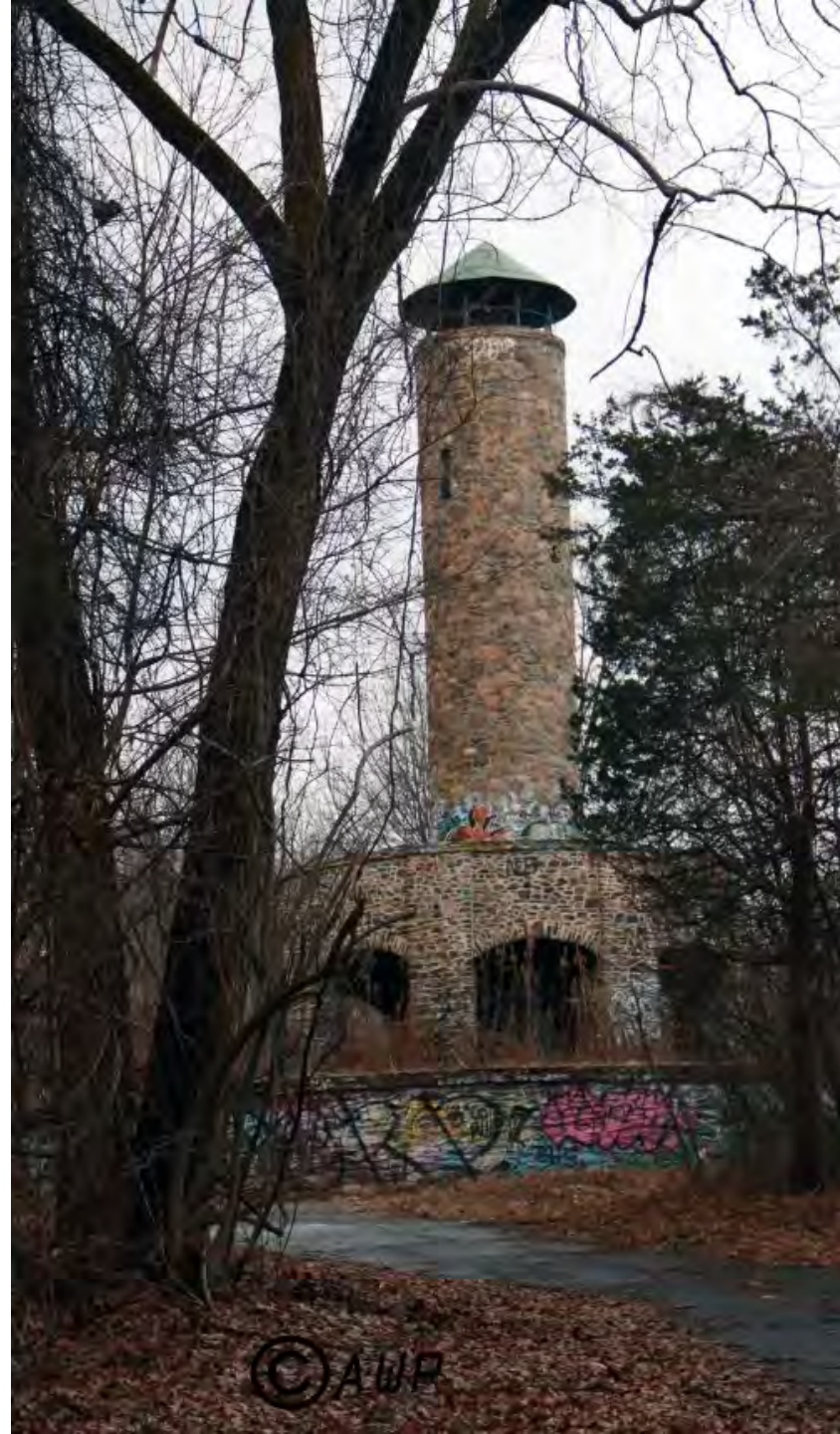
## *Scraping Off Much Of Hill For Route 91*

**IT'S A LONG WAY DOWN . . .** And this term could be used in a lot of ways when it comes to the steady eating away at the east side of Anniversary Hill, the huge preparation job for Interstate Highway 91. Road scrapers, pay-loaders, graders and Euclids have been going up and down Anniversary Hill from Community Field like droves of ants carting away earth for other sections of the

road. There are sections of the Anniversary Hill cut which will go to the depth of 78 feet, a tremendous slice out of the side of the hill. The eventual road level will not be reached for some time. This picture was taken from Community Field looking north, and the top of the hill in the distance is just opposite the intersection of Northampton and Dwight Sts.







© AWP







Community Field



**Anniversary Hill Park - 14.1ac**  
**Aerial Image**

Holyoke, MA  
Date Created: November 19, 2020





estará disponible desde el estacionamiento de Community Field.

restauración de la ciudad para Anniversary Hill Park y Scott Tower

¿Preguntas? Llame a la Oficina de Conservación y Sostenibilidad al 413-322-5615

**SCOTT TOWER CLEANUP AND RESTORATION UPDATE**

**SUNDAY, AUGUST 27TH 2023**

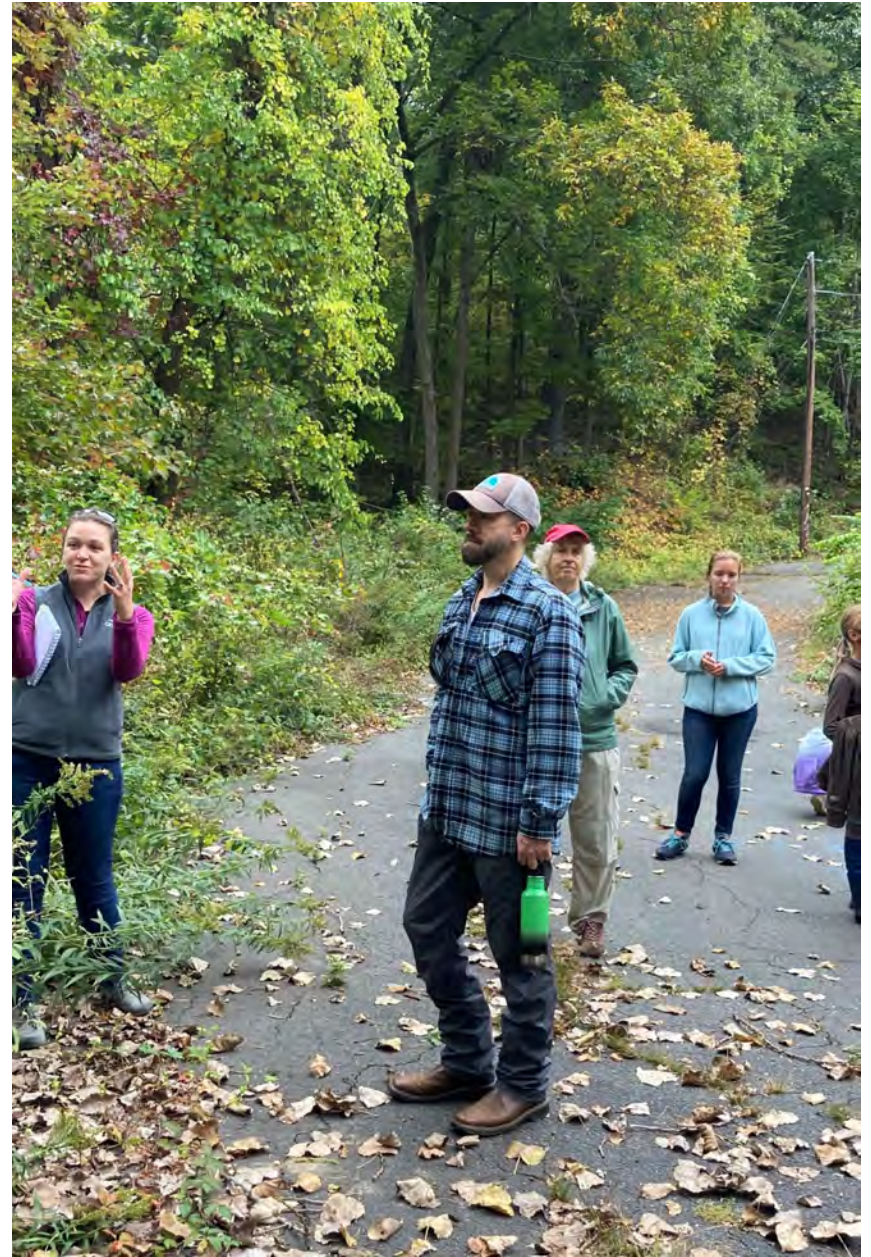
**9 AM - 11:30 AM SCOTT TOWER CLEANUP**

Join the Friends of Scott Tower group to clean up and beautify the area. Driving access to Scott Tower will be available from the Community Field parking lot.

**1 PM - 2 PM RESTORATION UPDATE**

Meet at the Community Field picnic pavillion for an update on the city's restoration plans for Anniversary Hill Park and Scott Tower

Questions? Call the Office of Conservation & Sustainability



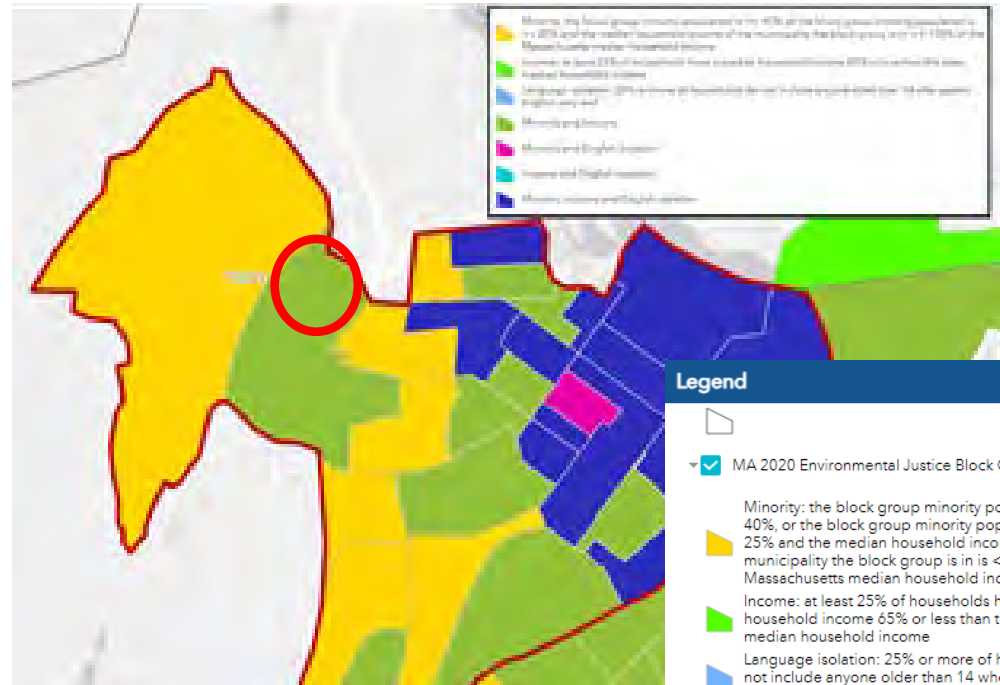
# MASTER PLAN OF RECONNECTING ANNIVERSARY HILL PARK

CITY OF HOLYOKE, MASS.

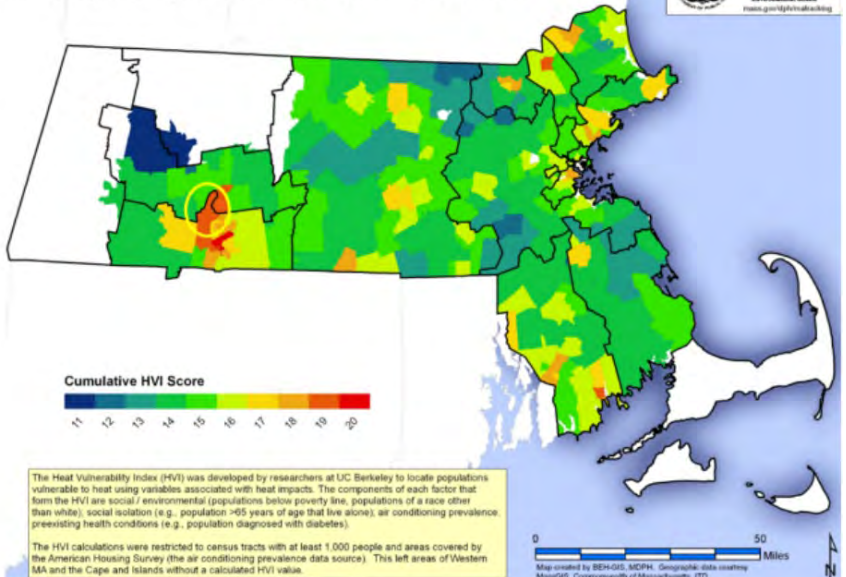
Prepared for the City of Holyoke  
Department of Conservation and Sustainability  
by GZA, Geoscientists, Inc.  
September, 2023

- LEGEND**
- PROPERTY BOUNDARY
  - EXISTING ROAD
  - MAINTENANCE ROAD
  - EXISTING TRAIL
  - PROPOSED HIKING TRAIL
  - PROPOSED ACCESSIBLE TRAIL\*
  - REMOVE INVASIVE VEGETATION, PROTECT SPECIMENTAL, HAZARDOUS PRUNE, ESTABLISH LAWN/MEADOW
  - WETLAND
  - STREAM
  - ★ PROPOSED PEDESTRIAN ACCESS POINT WITH WAITING/ TRAILHEAD KIOSK
  - CIVILIAN CONSERVATION CORPS STRUCTURES
  - SCOTT'S TOWER
  - PROPOSED BUILDING
  - EXISTING CELL TOWER
  - \*TO BE CONSTRUCTED SPRING 2024 WITH SEPARATE FINANCING SOURCES

- 1 NEW PARKING AND TRAILHEAD INFORMATIONAL KIOSK
- 2 NEW ACCESSIBLE TRAIL FROM NEIGHBORHOOD TO ANNIVERSARY HILL PARK'S MULTI-USE PATH
- 3 NEW ACCESSIBLE TRAIL AND BOARDWALKS INCLUDING BRIDGE OVER EXISTING INTERSTATE-91 STREAM CULVERT HEADWALL
- 4 IMPROVE PEDESTRIAN ACCESS POINT, NEW PARK SIGNAGE, TRAILHEAD KIOSK, VEHICLE AIR GATE, MOUNTAINABLE CURB, BOLLARDS, LANDSCAPING
- 5 IMPROVE ROAD AND PEDESTRIAN ROUTE UNDER HIGHWAY UNDERPASS, CLEAR VEGETATION, WIDEN PEDESTRIAN ROUTE, NEW FENCE, LIGHTING, SIGNAGE
- 6 NEW PARKING AREA WITH ACCESSIBLE PARKING SPACES
- 7 NEW MULTI-USE SHARED TRAIL/ROAD, WIDEN SHOULDER, IMPROVED STORMWATER INFRASTRUCTURE, INSTALL GUARDRAILS
- 8 IMPROVE EXISTING TRAILS THROUGHOUT
- 9 NEW SEATING/OVERLOOK AREAS ALONG MULTI-USE SHARED TRAIL
- 10 REPAIR CCC BULLY STONE RETAINING WALLS, PEDESTRIAN BRIDGES, DAM, AND SPILLWAY
- 11 REPAIR/IMPROVE STORMWATER DRAINAGE PIPE UNDER ROAD
- 12 NEW PICNIC PAVILION
- 13 NEW RESTROOMS & PARKS MAINTENANCE BUILDING
- 14 NEW PARKING AREA WITH ACCESSIBLE PARKING SPACES
- 15 NEW NATURE PLAYGROUND
- 16 NEW ACCESSIBLE RAMP TO FIRST FLOOR OF SCOTT'S TOWER, REPAIR MASONRY, CLEAR VEGETATION, INSTALL GUARDRAILS AND RAILINGS
- 17 ACCESSIBLE TRAIL & UNDERGROUND UTILITY CORRIDOR\*
- 18 NEW PARKING LOT WITH ACCESSIBLE PARKING AND TRAIL HEAD KIOSK\*



Heat Vulnerability Index by Zip Code & MA Emergency Preparedness Regional Coalition Boundaries



# RECONNECTING ANNIVERSARY HILL PARK

CITY OF HOLYOKE, MASS.

Prepared for the City of Holyoke  
Department of Conservation and Sustainability  
by G2A, Land Environmental, Inc.  
September, 2023

- LEGEND**
- PROPERTY BOUNDARY
  - EXISTING ROAD
  - MAINTENANCE ROAD
  - EXISTING TRAIL
  - PROPOSED HIKING TRAIL
  - PROPOSED ACCESSIBLE TRAIL\*
  - REMOVE INVASIVE VEGETATION, PROTECT SPECIMEN TREE, HAZARD PRUNE, ESTABLISH LAWN/MEADOW
  - WETLAND
  - STREAM
  - PROPOSED PEDESTRIAN ACCESS POINT WITH WAYFINDING/TRAILHEAD KIOSK
  - CIVILIAN CONSERVATION CORPS STRUCTURES
  - SCOTT'S TOWER
  - PROPOSED BUILDING
  - EXISTING CELL TOWER
- \* TO BE CONSTRUCTED SPRING 2024 WITH SEPARATE FUNDING SOURCES
- NEW PARKING AND TRAILHEAD INFORMATIONAL KIOSK
  - NEW ACCESSIBLE TRAIL FROM NEIGHBORHOOD TO ANNIVERSARY HILL PARKS MULTI-USE PATH
  - NEW ACCESSIBLE TRAIL AND BOARDWALKS INCLUDING BRIDGE OVER EXISTING INTERSTATE-91 STREAM CULVERT HEADWALL
  - IMPROVE PEDESTRIAN ACCESS POINT, NEW PARK SIGNAGE, TRAILHEAD KIOSK, VEHICLE AIR GATE, MOUNTAINABLE CURB, BOLLARDS, LANDSCAPING
  - IMPROVE ROAD AND PEDESTRIAN ROUTE UNDER HIGHWAY UNDERPASS. CLEAR VEGETATION, WIDEN PEDESTRIAN ROUTE, NEW FENCE, LIGHTING, SIGNAGE
  - NEW PARKING AREA WITH ACCESSIBLE PARKING SPACES
  - NEW MULTI-USE SHARED TRAIL/ROAD. WIDEN SHOULDER, IMPROVED STORMWATER INFRASTRUCTURE, INSTALL GUARDRAILS
  - IMPROVE EXISTING TRAILS THROUGHOUT
  - NEW SEATING/OVERLOOK AREAS ALONG MULTI-USE SHARED TRAIL
  - REPAIR CCC-BUILT STONE RETAINING WALLS, PEDESTRIAN BRIDGES, DAM, AND SPILLWAY
  - REPAIR/IMPROVE STORMWATER DRAINAGE PIPE UNDER ROAD
  - NEW PICNIC PAVILION
  - NEW RESTROOMS & PARKS MAINTENANCE BUILDING
  - NEW PARKING AREA WITH ACCESSIBLE PARKING SPACES
  - NEW NATURE PLAYGROUND
  - NEW ACCESSIBLE RAMP TO FIRST FLOOR OF SCOTT'S TOWER, REPOINT MASONRY, CLEAR VEGETATION, INSTALL GUARDRAILS AND RAILINGS
  - ACCESSIBLE TRAIL & UNDERGROUND UTILITY CORRIDOR\*
  - NEW PARKING LOT WITH ACCESSIBLE PARKING AND TRAIL HEAD KIOSK\*



## Awarded Funding:

\$1.7 Million

- Community Preservation Act
- LWCF (x2) via MA DCS
- Community Development Block Grant
- ARPA via MA EEA (Thanks Kurt!)
- Mass Trails Grant
- Municipal Vulnerability Preparedness Program (MVP)

## Pending:

\$5 million

- DOT Reconnecting Communities & Neighborhoods Grant