

# FY25 PARC, LAND and Conservation Partnership Grants - Now Open!

- LAND and PARC Grant deadline: Thursday, July 11, 2024 at 3:00 pm
- Conservation Partnership Grant deadline: Monday, July 15, 2024 at 3:00 pm
- Two LAND and PARC grant workshops
  - May 6, 2024 at 11:00 am at DFW Headquarters in Westborough
  - May 9, 2024 at 2:00 pm on Teams
- Landscape Partnership Grant deadline is Thursday, April 18, 2024

# Team Up With Your Municipality: DCS Open Space & Recreation Grant Programs

Massachusetts Land Conservation Conference  
March 23, 2024

# DCS Grant Programs

---

**Conservation Partnership** – Grants for [land trusts](#) to protect conservation land

---

**Land and Water Conservation Fund** – Grants for [municipalities](#) or [state agencies](#) to pursue conservation and recreation projects

---

**PARC Grant Program** – Grants for [municipalities](#) to protect recreation land and/or develop new or renovate existing parks

---

**LAND Grant Program** – Grants for [municipalities](#) to protect conservation land

---

**Drinking Water Supply Protection** – Grants for [municipal water supplier/water districts](#) to protect public water supply lands

---

**Landscape Partnership** – Grants for large-scale conservation projects submitted by 2+ partners ([land trusts](#), [municipalities](#), and/or [state agencies](#)).



Greenfield Skate Park, Photo by WIZZ

# DCS Grant Priorities

- Landscape protection
- Biodiversity and natural resource protection
- Conservation of forested land
- Expansion of recreational opportunities
- Location in Environmental Justice neighborhood
- Climate resiliency

# Conservation Partnership Grant Program

## Eligible projects:

- § Land acquisition for conservation and recreation
- § Due diligence expenses for gifts
- § Fee simple or CR projects are eligible
- § Eligible entities are 501(c)(3) non-profits with environmental, conservation, or recreation purpose



White Pond, Harwich Conservation Trust, Photo by Harwich Conservation Trust

# Conservation Partnership Grant Program Requirements

- Convey a CR to municipal or state agency or land trust
- Must retain an interest in the property – applicant cannot be used as a pass through
- Land must have public access and benefit
- Conservation and recreation use only



Bowles Field Historic Landscape Project, Barnstable, Photo by Barnstable Land Trust

# Conservation Partnership Grant Program Information

- Maximum grant award is \$300,000
- Reimbursement rate is 50% of total cost



Elmlea Woods, Boxford, Photo by Essex County Greenbelt Association

# Land and Water Conservation Fund Grant Program

- Federal money from the National Park Service
- DCS administers the program for Massachusetts
- Can fund recreation, conservation, and trail projects



Coes Reservoir, Worcester, Photo by Worcester Magazine



# LWCF Grant Program Requirements

- Reimbursement rate is up to 50%
- Maximum grant award \$1 million, minimum \$50,000
- Projects must also be approved by the NPS



Monatiquot River Trail, Braintree, Photo by North and South Rivers Watershed Association

# PARC Grant Program

- Eligible projects:
  - Purchase parkland
  - Develop new public outdoor recreation facilities
  - Renovate existing municipal public parks



Buckland Recreation Area Pool, Photo by FRCOG

## PARC Grant Program Requirements

Applicant must have an approved Open Space and Recreation Plan

Any city regardless of size or town with a population of 35,000 or more is eligible for maximum grant award amount

Towns smaller than 35,000 may apply under the "small town," "regional," or "statewide" category

Must have an authorized park/recreation commission and conservation commission

Land must be dedicated to public park purposes and under custody of Park or Recreation Commission or Park Department

# PARC Grant Program Information



Herlihy Park, Whately, Photo by [www.triphobo.com](http://www.triphobo.com)

- Public should participate in project selection and design
- State assistance ranges from 52 to 70% of total project cost
- Project must have municipal vote that authorizes application, raises/borrows/appropriates *total* project cost (not just local share), and dedicates land to recreation purposes
- Maximum grant award is \$500,000



## LAND Grant Program

---

- Town or city's purchase of land or CR for natural resource protection & passive outdoor recreation.
- Maximum grant award is \$500,000
- State assistance ranges from 52 to 70% of total project cost

# LAND Grant Program Requirements

Applicant must have an approved Open Space and Recreation Plan

Must have votes to authorize conservation or agricultural commission to apply, hold land, and secure project cost.

Public access must be provided for passive recreational use.

Land is permanently protected under Article 97

CPA is an eligible source of funding. If CPA is used the CPA required CR will need to be recorded prior to grant reimbursement.



# DWSP Grant Program Information

---

- Purchase of land or CR for drinking water supply protection, conservation and recreation
- Maximum grant award is \$350,000
- Reimbursement rate is 60% of total project cost.

# DWSP Grant Program Requirements

Property must be located in a Drinking Water Supply Protection zone, or an area designated for anticipated future water supply use

DEP public hearing and approval required (award indicates preliminary approval)

Vote by Board of Water Commissioners (or Board of Selectmen authorized as such) to authorize purchase for water quality protection, and to secure project cost.

Public access passive recreation where appropriate and/or in compliance with Zone I restrictions.

Land is permanently protected under Article 97

CPA is an eligible source of funding. If CPA is used the CPA required CR will need to be recorded prior to grant reimbursement.



# Landscape Partnership Grant Program Requirements

---

- Maximum award: \$1,250,000
- 50% reimbursement rate
- Eligible for funding:
  - Fee acquisition
  - CR/APR/WPR
  - Due diligence for gifts contributed as part of eligible projects



Leyden Working Farms and Forest Photo by Franklin Land Trust

# Landscape Partnership Grant Program

---

## Eligible projects:

- Contiguous landscapes, or parcels connected through protected land, that meet minimum acreage threshold (100-500 acres min.)

AND

- 2+ applicants from the following:
  - Municipality
  - Land trust
  - State/federal land agency
- Multi-year projects are acceptable

Counties	Minimum Acreage
Berkshire, Franklin, Worcester	500 acres
Hampden	300 acres
Bristol, Hampshire, Plymouth	250 acres
Essex	200 acres
Barnstable, Dukes, Middlesex, Nantucket, Norfolk, Suffolk	100 acres

# Projects with Land Trust Involvement

Program	Grantee	Partner	Project
LWCF	Town of Berlin	Sudbury Valley Trustees	Webjo Co Property
	City of Lowell	MassAudubon	Perron Farm
	Town of Holden	Greater Worcester LT/ White Oak Land Conservation Society	Holbrook Lot 5
	Town of Middleborough	Ja Mar Farm	Wildlands Trust
	Dept of Fish & Game	North County LT	Mount Watatic II
PARC	Town of Boylston	Greater Worcester LT	Camp Harrington
	City of Easthampton	Kestrel Land Trust	Mt. Tom Trailhead
	Town of Sunderland	Franklin Land Trust	Riverside Park
	Town of Stoughton	Wildlands Trust	Glen Echo Park
	City of Lowell	Lowell Parks and Conservation Trust	Concord River Greenway
	Town of Falmouth	The 300 Committee	Teaticket Park
	Town of Provincetown	The Trustees of Reservations	Dunes Edge Campground

# Projects with Land Trust Involvement

---

Program	Grantee	Partner	Project
LAND	Dennis	Dennis Conservation Trust	Tobey West Property
	Groton	Groton Conservation Trust	Dennis Land Acquisition
	Monson	Opacum Land Trust	Booker Project
	Ipswich	Essex County Greenbelt	Kamon CR
DWSP	Fitchburg DPW	North County Land Trust	Kerlinger CR
	Fitchburg DPW	The Trustees of Reservations	Jewell Hill
	Haverhill	Essex County Greenbelt	Meserve Woods
	Southampton Water Commission	Kestrel Land Trust	Upper Pomeroy Meadow

---

## **Vanessa Farny (857) 330-1978**

[vanessa.farny@mass.gov](mailto:vanessa.farny@mass.gov)

For questions on LAND, Small Communities, Drinking Water Supply Protection, and Landscape Partnership Grant Programs.

## **Melissa Cryan (857) 274-7173**

[melissa.cryan@mass.gov](mailto:melissa.cryan@mass.gov)

For questions on Conservation Partnership, PARC, Land & Water Conservation Fund Grant Programs, as well as Open Space and Recreation Plans.

[www.mass.gov/grant-programs-offered-by-the-division-of-conservation-services](http://www.mass.gov/grant-programs-offered-by-the-division-of-conservation-services)

# Land Trusts and Municipalities: Partnering and Cracking the Funding Nut

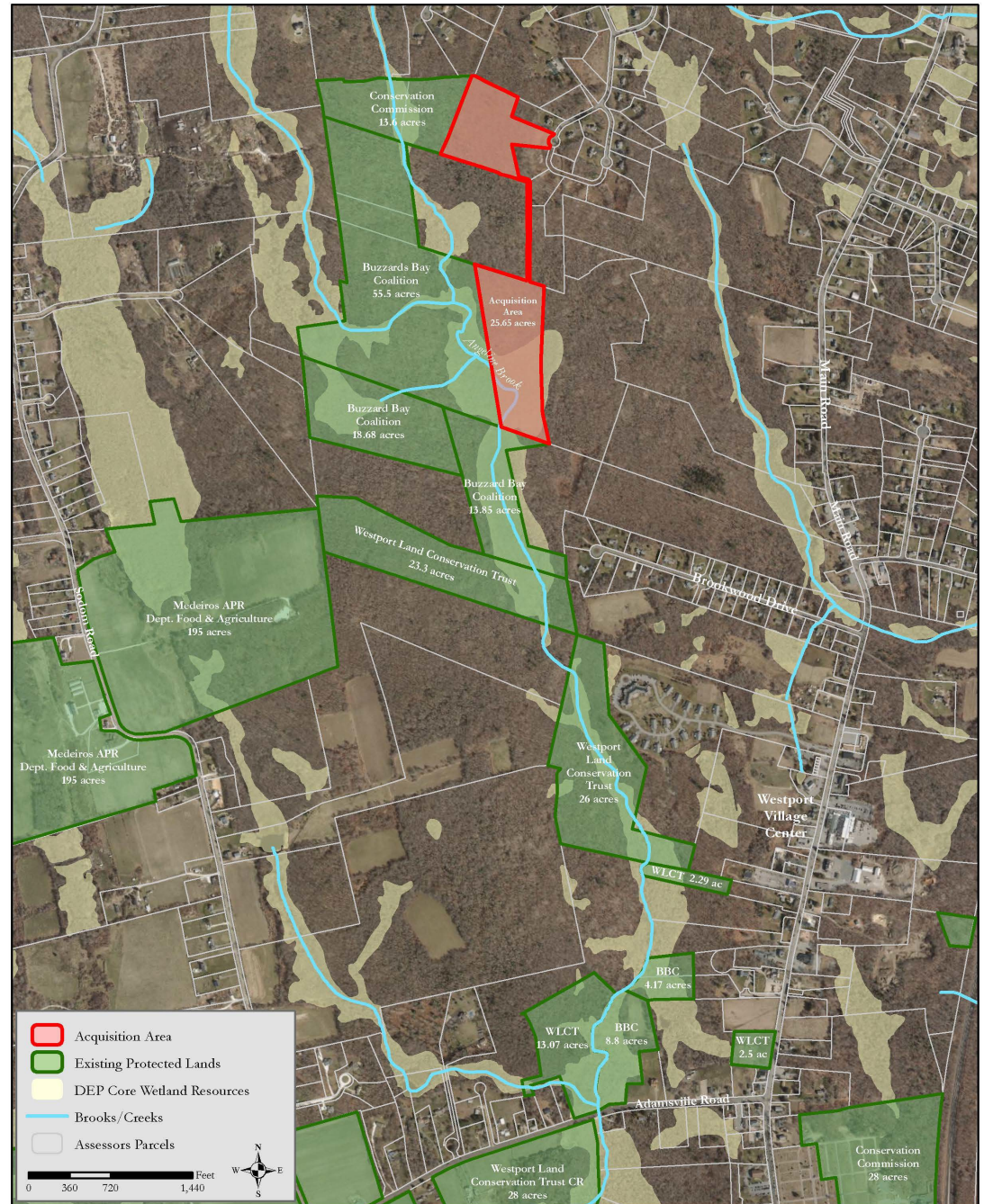
ALLEN DECKER

LAND PROTECTION DIRECTOR



# Angeline Brook – Westport Land and Water Conservation Fund

Partner	Funding Source	Amount
Town of Westport (Con Comm)	LWCF	\$105,500
BBC	Private Fundraising	\$109,500 (plus closing costs)
<b>Total Purchase Price</b>		<b>\$215,000</b>



## Bayberry Hill – Gosnold Local Acquisitions for Natural Diversity

Partner	Funding Source	Amount
Town of Gosnold (Con Comm)	EEA LAND Grant	\$400,000
	BBNEP Muni Grant	\$20,000
BBC	Other Grants and Private Fundraising	\$304,000
		\$301,000 (plus closing costs)
Total Purchase Price		\$1,025,000



- Project Parcel (11 acres)
- Existing Protected Lands
- DEP Core Wetland Resources
- Assessors Parcels

Data Source: MassGIS

0 500 1,000 2,000 Feet

Map prepared by: Buzzards Bay National Estuary Program, 81-B County Road, Suite E, Mattapoisett, MA 02739 [www.buzzardsbay.org](http://www.buzzardsbay.org) March 20, 2024



## Paskamansett Woods – Dartmouth Drinking Water Supply Protection Grant

Partner	Funding Source	Amount
Town of Dartmouth (BPW)	EEA DWSP Grant	\$350,000
	and CPA Funding	\$250,000
BBC	Private Fundraising	\$190,000 (plus closing costs)
Total Purchase Price		\$790,000

